

Elevation "A" 2566 sq. ft.



ASHTON RIDGE HOMES

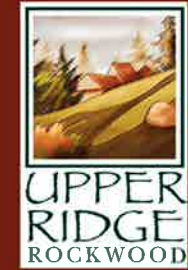
**Head Office**

160 Southgate Drive  
 Guelph, Ontario, N1G 4P5  
 Phone: (519)822-3988  
 Toll free: (888)557-0107  
 Fax: (519)823-8887  
 Info: info@ashtonridge.com



**Rockwood Ridge Sales Centre**

170 Jolliffe Ave,  
 Rockwood, Ontario, N0B 2K0  
 Toll free: (866)275-5558  
 Phone: (519)856-4670  
 Mobile: (519)241-8160  
 Sales: rockwood@ashtonridge.com



# THE MONACO

2765 sq. ft.



Elevation B

Artist's Concept

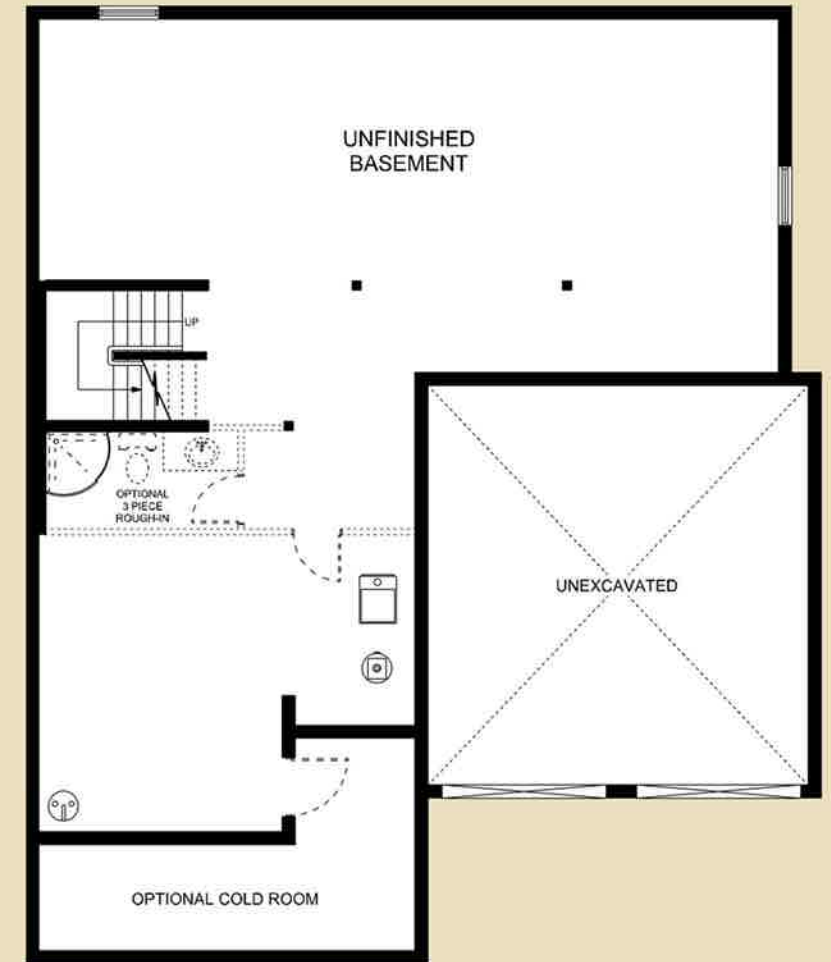
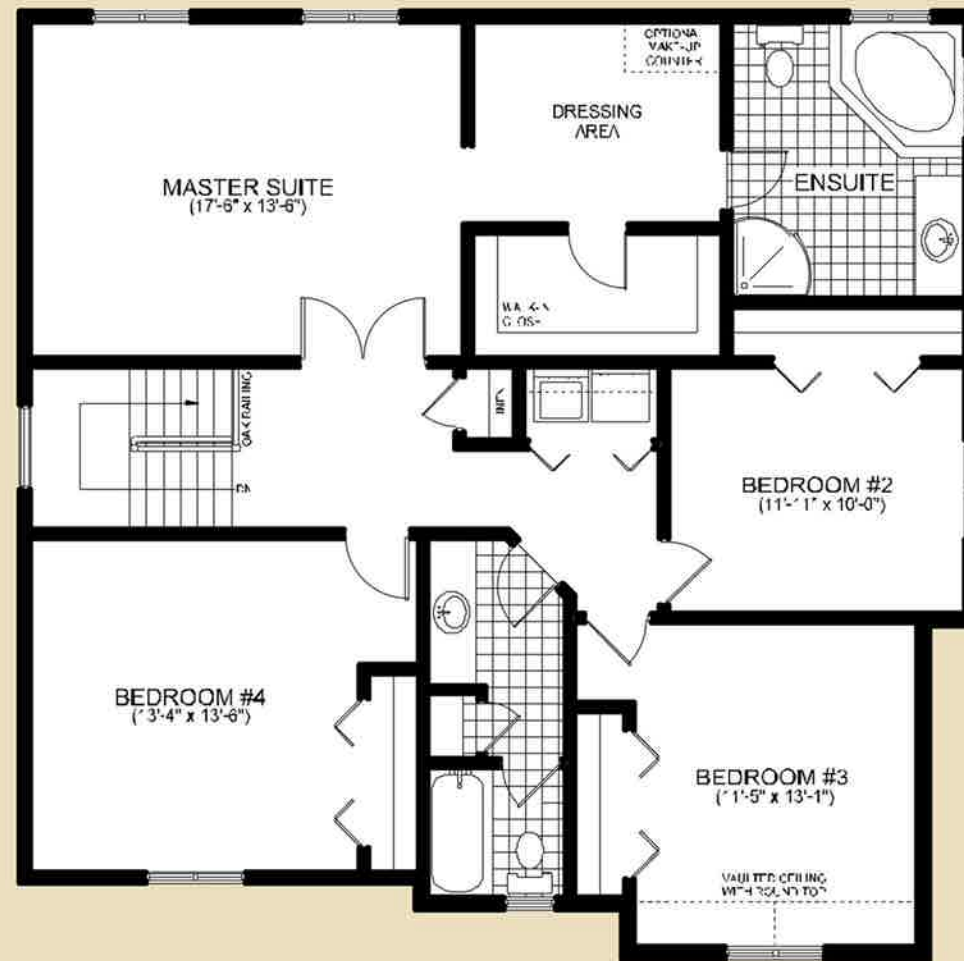
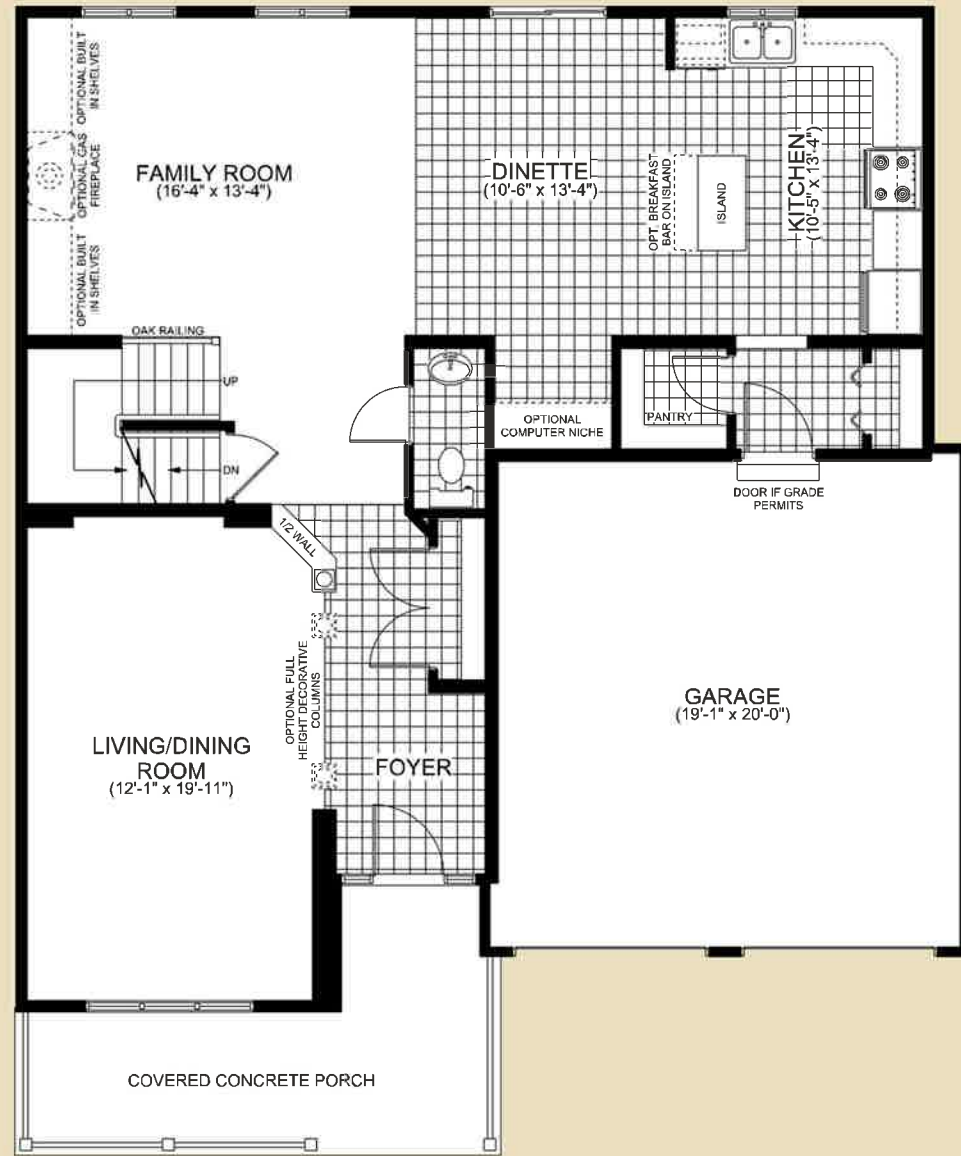


ASHTON RIDGE HOMES



UPPER  
RIDGE  
ROCKWOOD

# THE MONACO 2566 sq. ft.



Main Floor Plan

Upper Floor Plan

Foundation Floor Plan

All drawings are Artist's Concepts and may vary slightly from the final product. E & O.E. Actual useable floor space may vary from stated area, and square footage has been calculated based on useable living space according to the Tarrion rules, and does not include garages or basement areas. Drawings may show optional features which may not be included in the Base Price. Bulkheads & box outs may be required as chases for plumbing & mechanical. Garage man door location may vary subject to grade. In an ongoing review of our homeowner's needs, changes may have been incorporated into our "New Home Features" and construction techniques.