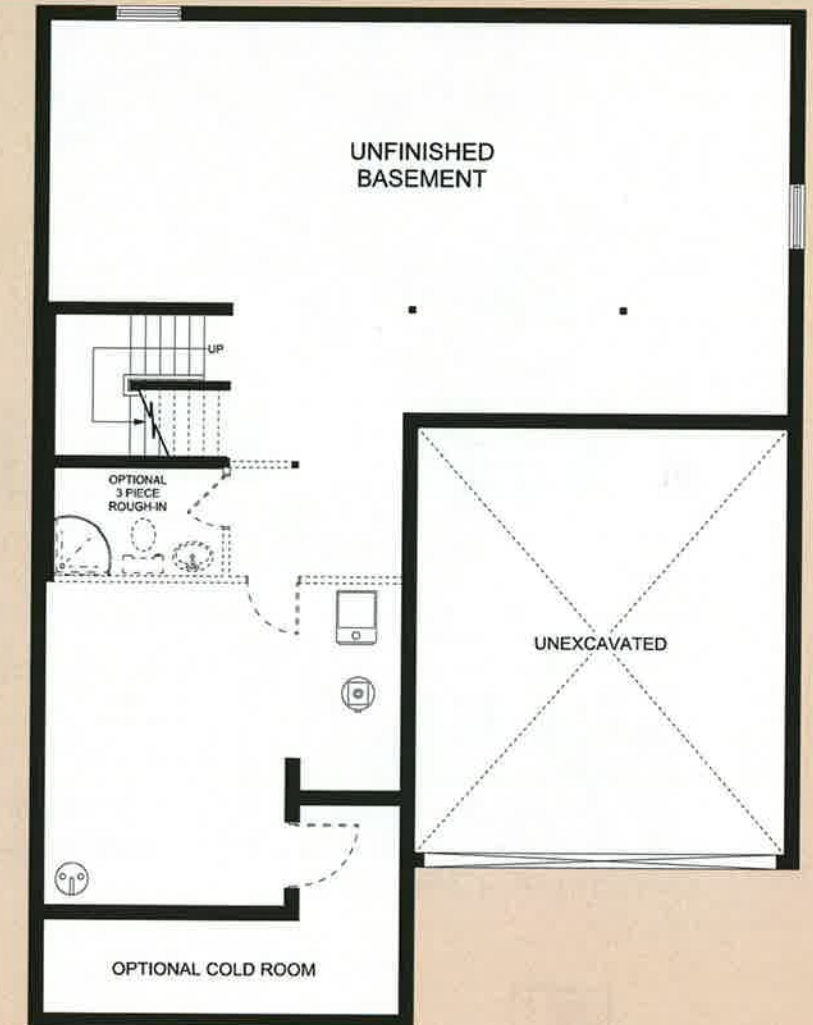
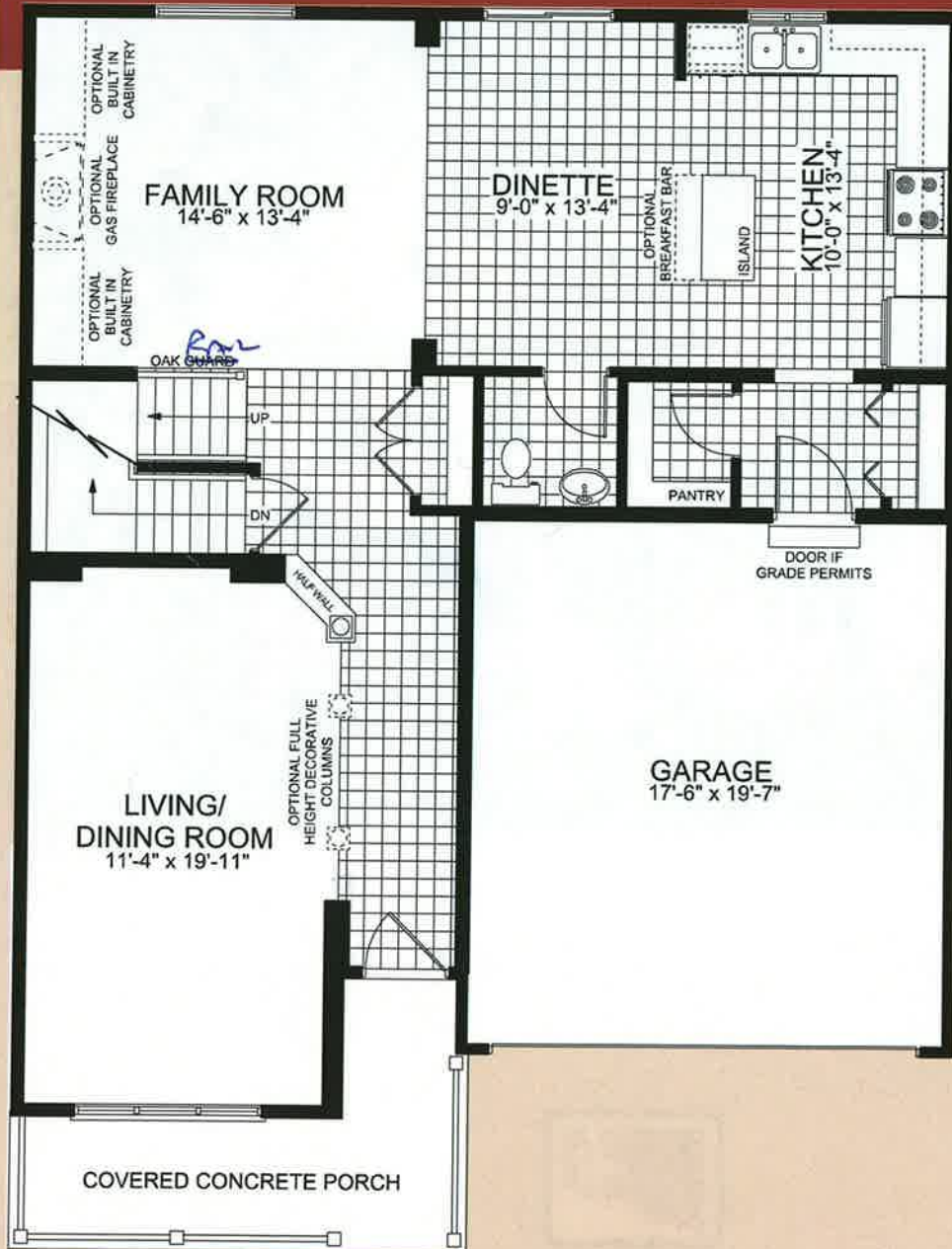


THE MONTREAUX

2392 sq. ft.



UPPER
RIDGE
ROCKWOOD

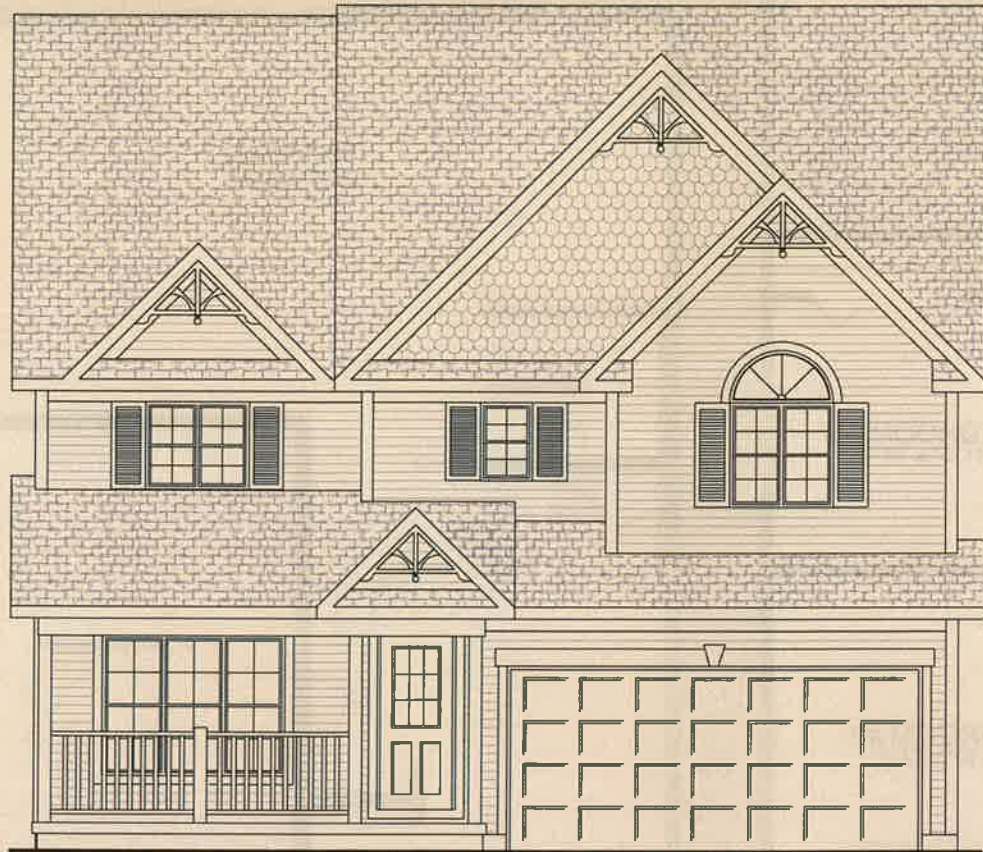


Main Floor Plan

Upper Floor Plan

Foundation Floor Plan

All drawings are Artist's Concepts and may vary slightly from the final product. E & O.E. Actual useable floor space may vary from stated area, and square footage has been calculated based on useable living space according to the Tarrion rules, and does not include garages or basement areas. Drawings may show optional features which may not be included in the Base Price. Bulkheads & box outs may be required as chases for plumbing & mechanical. Garage man door location may vary subject to grade. In an ongoing review of our homeowner's needs, changes may have been incorporated into our "New Home Features" and construction techniques.



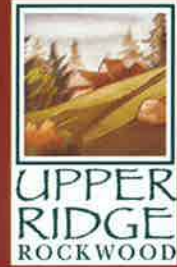
Elevation A - 2405 sq. ft.



ASHTON RIDGE HOMES
Head Office
RR#5, 5551 Highway 6 North,
Guelph, Ontario, N1H 6J2
Phone: (519)822-3988
Toll free: (888)557-0107
Fax: (519)823-8887
Info: info@ashtonridge.com



Rockwood Ridge Sales Centre
170 Jolliffe Ave,
Rockwood, Ontario, N0B 2K0
Toll free: (866)275-5558
Phone: (519)856-4670
Mobile: (519)241-8160
Sales: rockwood@ashtonridge.com



THE MONTREAUX

2392 sq. ft.



Elevation B

Artist's Concept



ASHTON RIDGE HOMES